

VST 75 / VST 120

Compact gate control unit with integrated frequency converter for rotation speed independent control especially of sectional gates.



Features

- Mechanic protecting gate movements with highest dynamic and speed.
- Plastic housing for easy installation.
- Diagnosis and failure display.
- Model inspected safety conception.
- Operation of three phase AC motors up to 0.75 kW or 1.2kW
- Slots for additional modules.
(e.g. Clear text display).
- Easy installation due to self-learning controller-set-ups and pre-installed parameters for most standard gates.

Please Contact Our Sales Department On 01928 579050 For Further Information

LEDs:

- Frequency converter status (green)
- Emergency Stop/24V (red)
- Safety Edge (yellow)
- Operation (green)

4-characters 7-segment

- User interface
- Diagnosis, Status display
- Parameter setup
- Service- + Cycle counter
- Error memory

Positioning via:

- mechanical limit switches
- electronic limit switches (absolute / Incremental)

3x Emergency stop/Safety

(Separate evaluation and diagnosis)

Integrated Safety edge controller

- Conductive edge
- Optical edge
- pneumatic with testing

24 V-Inputs 1...10

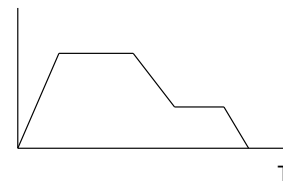
- programmable, for example:
- ext. Open-, Stop-, Close-commands
- light beams
- additional safety equipment
- One channel, input series
- cross traffic logic
- door lock
- Deadman/automatic operation

Additional features

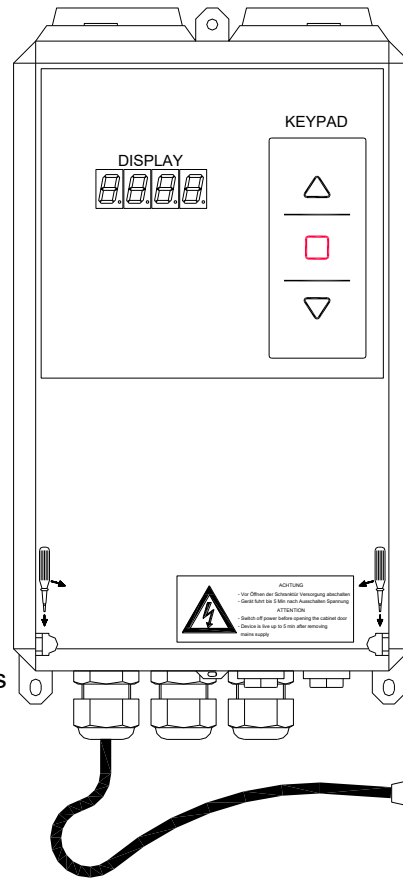
- Conform with TÜV and CE regulations.
- 24 V DC control voltage VDE 0700.
- integrated control electronic works with different safety strips (resistance / optical systems).
- ESD resistance up to 25 kV!
- Plug in sockets for additional modules:
 - One-/two channel inductive loop detector.
 - One-/two channel radio (FM 433 MHz / 868 MHz).
 - VFD display with multilingual real text display.
 - Expansion card for interlocking.
- mechanical or electronic limit switch operation.
- incl. CEE-plug as main switch.
Option: Emergency stop push button.
- Plug in terminals for main control functions.
- up to 17 digital inputs and 2 relay outputs have standard functions ex factory - various special functions can be selected on side:
- Functionality, operating mode, in-/output type, clear-/open hold-timer, directional logic, diagnostic for LCD, ...
- Version TST FUS-C with additional brake resistor (chopper) for discharge of generated voltage.

Frequency converter with variable speed & ramps

V (f)



Automatic adaptation self learning !



Motors up to 0.75 kW at 230 V

(U, V, W)

Option: Brake chopper + resistance control.

electro mechanical brake

- separate controlled relay output
- potential free Form C contact

Power supply for external equipment

- Input power protected on board
- Regulated 24 V DC VDE0700

2x Relay

(voltage free change over contacts)

- door position status
- warning light / traffic lights
- error message
- door lock
- hall light

Technical data

Housing:

Plastic with head-sink
WxHxD: 180 x 320 x 110 mm

Input power:

1~240 Vac +/- 10% / 50-60Hz

Motor wiring:

for 3-phase motors
up to 0.75 kW / 5 A or 1.2kW / 8A

Possible operating frequency:

6 - 200 Hz

separate, adjustable frequency ramps for all door operating modes

Control voltage/ Supply voltage for external equipment:

24Vdc, 24Vdc +/- 5% / 250mA
electrical short protected

Temperature range:

Operation: -20°C up to 50°C

Storage: -20°C up to 70°C

Regulations:

Doors: EN 12453 / EN 12978

Low voltage.: EN 60335 (VDE 0700)

EMC: EN 50081 / EN 50082

Standards:

TÜV Germany

Please Contact Our Sales Department
On 01928 579050 For Further Information