

NBG Range Fire Door Operators



STANDARD FEATURES

- Integral starter unit
- Low voltage controls
- Plug & socket fit solenoid release
- Pre-wired to plug & P.B.S.
- Four limits

OPTIONAL FEATURES

- Choice of release mechanisms
- Bracket pack

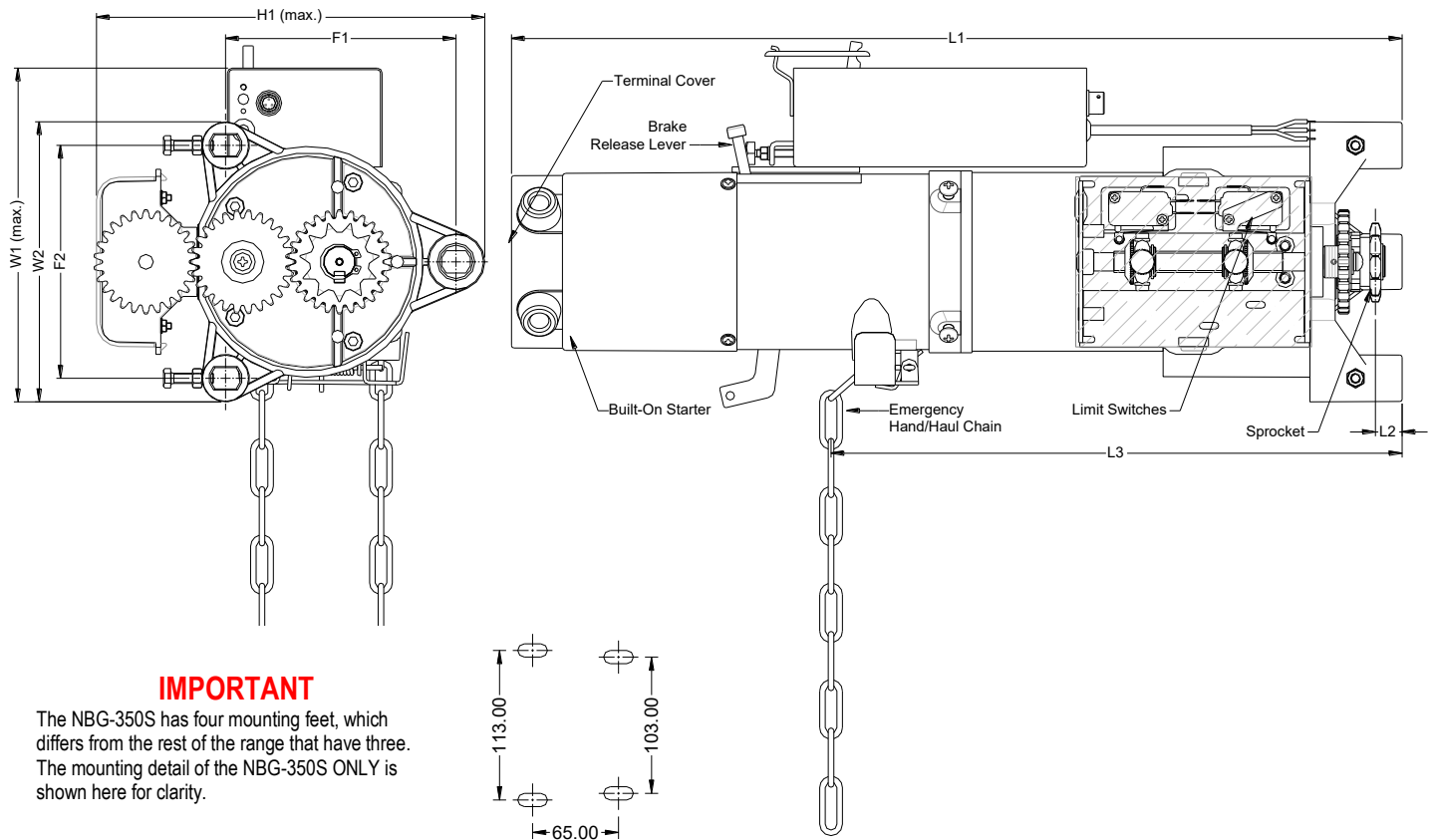
Operator specification	NBG-350S	NBG-600S	NBG-800S	NBG-1000S	NBG-600T	NBG-800T	NBG-1000T
Voltage (V)	230 (1ph)	230 (1ph)	230 (1ph)	230 (1ph)	400 (3ph)	400 (3ph)	400 (3ph)
Current (A)	2.2	2.9	3.5	4.1	1.7	2.0	2.5
Power (Kw)	0.25	0.37	0.45	0.55	0.37	0.45	0.75
Speed (rpm)	24	30	30	24	30	30	24
Torque (Nm)	43	75.5	110	124	75.5	110	220
Limit turns	60	60	75	65	60	75	65

Bracket pack specification	NBG-350S	NBG-600S	NBG-800S	NBG-1000S	NBG-600T	NBG-800T	NBG-1000T
Ratio	50 / 11	50 / 9	55 / 9	60 / 9	50 / 9	55 / 9	60 / 9
Chain pitch	1/2 x 5/16	5/8 x 3/8	5/8 x 3/8	3/4 x 7/16	5/8 x 3/8	5/8 x 3/8	3/4 x 7/16
Speed @ barrel (rpm)	6.1	5.7	5.6	3.6	5.7	5.6	3.6
Torque @ barrel (Nm)	170	420	660	825	420	660	1460
Lift capacity (Kg)	245 @ 5"	525 @ 5"	635 @ 6.625"	785 @ 6.625"	525 @ 5"	635 @ 6.625"	1360 @ 6.625"

ALSO AVAILABLE AS A STANDARD ROLLING DOOR OPERATOR
Please contact our sales department on 01928 579050 for further information

Operator Dimensions

NBG Range Operators | Fire Door Operators



IMPORTANT

The NBG-350S has four mounting feet, which differs from the rest of the range that have three. The mounting detail of the NBG-350S ONLY is shown here for clarity.

Details		Operator					Mounting details				Sprocket	
Operator	Order code	L1	L2	L3	W1	W2	H1	F1	F2	Bolt Size	Teeth	Pitch
NBG-350S	25-5350	470	11.5	300	205	135	161.5	65	113/103	M10	11	1/2"
NBG-600S	25-5060	512.5	12	315	198	127	185.5	94	94	M10 / M12	9	5/8"
NBG-800S	25-5046	508	17.5	340	205	160	218.5	118	132	M12 / M14	9	5/8"
NBG-1000S	25-5048	555	38	365	225	211.5	265	154	170	M14	9	3/4"
NBG-600T	25-5063	510	12	310	198	127	185.5	94	94	M10 / M12	9	5/8"
NBG-800T	25-5044	506	17.5	340	205	160	218.5	118	132	M12 / M14	9	5/8"
NBG-1000T	25-5042	555	38	365	225	211.5	265	154	170	M14	9	3/4"

Note: Some dimensions may vary depending on operator handing i.e. rotating housing.

Please contact our sales department on 01928 579050 for further information