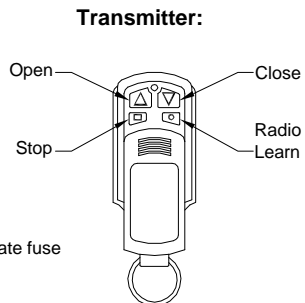


Please read these instructions carefully before attempting installation.

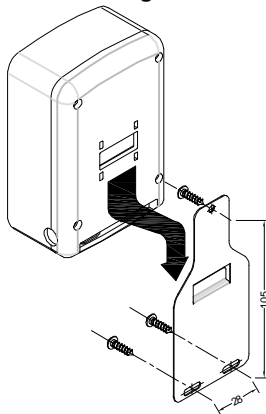
**IMPORTANT:** This receiver is unsuitable for outdoor installation unless fitted inside an IP65 enclosure. Determine a suitable location and using the wall bracket as a template drill three Ø4mm holes to a depth of 35mm. Remove the receiver mounting hole access knockouts and fit the receiver to the bracket. Using the wall plugs screws supplied fix the wall bracket in place. Ensure all connections are made in accordance with the corresponding wiring diagram. Replace the receiver cover, ensuring that the cover is clipped fully in place. Installation is now complete.

**Technical Details:**

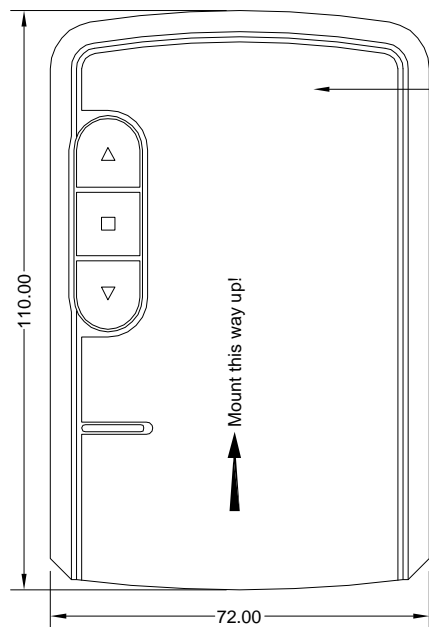
**Frequency:** 433.92Mhz  
**Environmental Protection:** IP2X  
**Power Supply:** 230VAC  
**Temperature Range:** -20 to 60°C  
**Standby Power:** 2W  
**Loading Capacity:** 1000W  
**Max. Transmitters:** 16 Rolling code.  
**Motor Fuse:** 10A depending on load. Please replace the appropriate fuse  
**Max. Run Time:** 4 Mins.



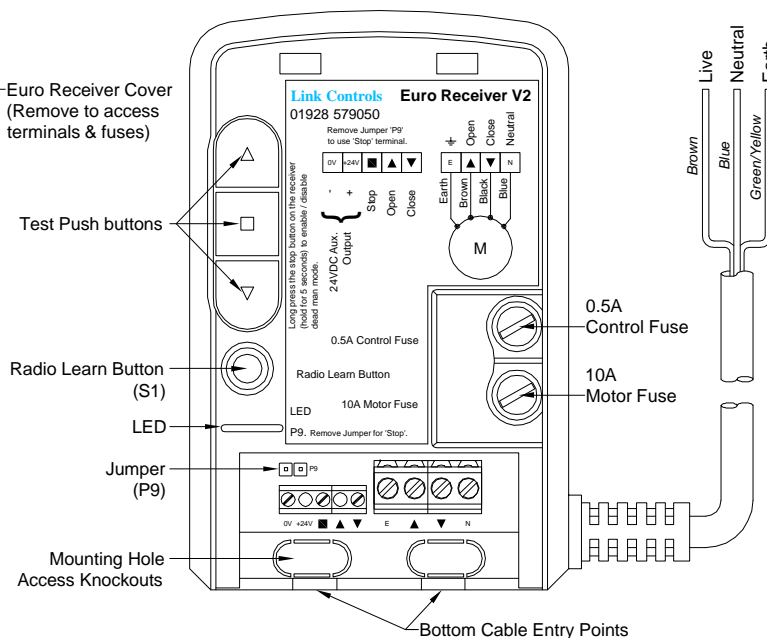
**Mounting Bracket:**



**General Arrangement & Dimensions:**

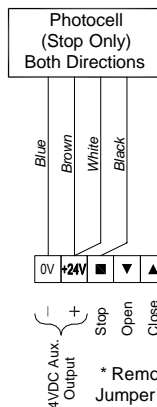


**Front View: Cover Removed**

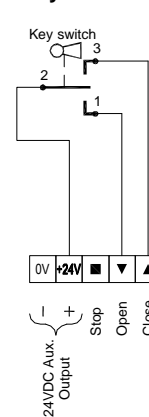


**Wiring Diagrams:**

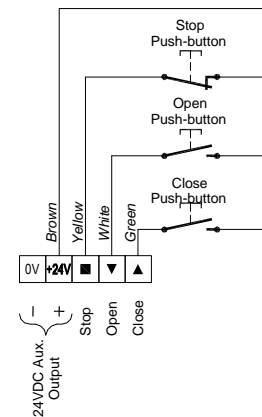
**Photocell**



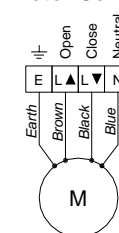
**Key switch**



**Push button Station**



**Motor Connections**



**IMPORTANT:** Please remove Jumper 'P9' to use the stop terminal. If the door/shutter operates in the opposite direction to that expected, interchange the black & brown wires to reverse the opening/closing direction

**Programming transmitters.**

Please note:  
 Remote programming of transmitters must be performed within range of the receiver.

Short press the receiver learning button 'S1', the LED will go out.  
 Short press the transmitter learning button 'O' once, the LED will blink 3 times and the motor will move once, the transmitter is now learned successfully.  
 If no buttons are pressed within 10 seconds, programming mode will automatically exit.

**Programming a new transmitter using a working transmitter**

Short press the learned transmitter button 'O' 6 times. the LED will go out. The motor will move once.  
 Within 10 seconds, short press the new transmitter learning button 'O' once, the LED will blink 3 times and the motor will move once indicating the learning progress is successful.

**Erase ALL transmitters from the Receiver.**

Long press the learning button 'S1' (hold for 5 seconds) don't release the button. The LED will blink 6 times then goes out. All transmitters are now erased.

**Selecting Impulse Open / Dead man Close.**

Long press the stop button on the receiver (hold for 5 seconds), don't release the button. The LED will blink 3 times then go on. The motor will move once.  
 Dead man mode is enabled.  
 Repeat to disable the dead man mode and enable impulse open mode.

T: +44 (0)1928 579050  
 F: +44 (0)1928 579259  
 www.linkcontrols.co.uk  
 sales@linkcontrols.co.uk



Title:-

EUROKIT V2  
 TECHNICAL DETAILS & INSTALLATION INSTRUCTIONS

Drawing No:- LC-2955	Page No:- 1 of 1
Revision No:- H	Rev Date:- 13/01/14
Drawn By:- R.A.H.	Date:- 17/01/11
Checked By:- S.B.P.	Appr' By:- A.M.

Stuart Rd, Manor Park, Runcorn, Cheshire, WA7 1TS