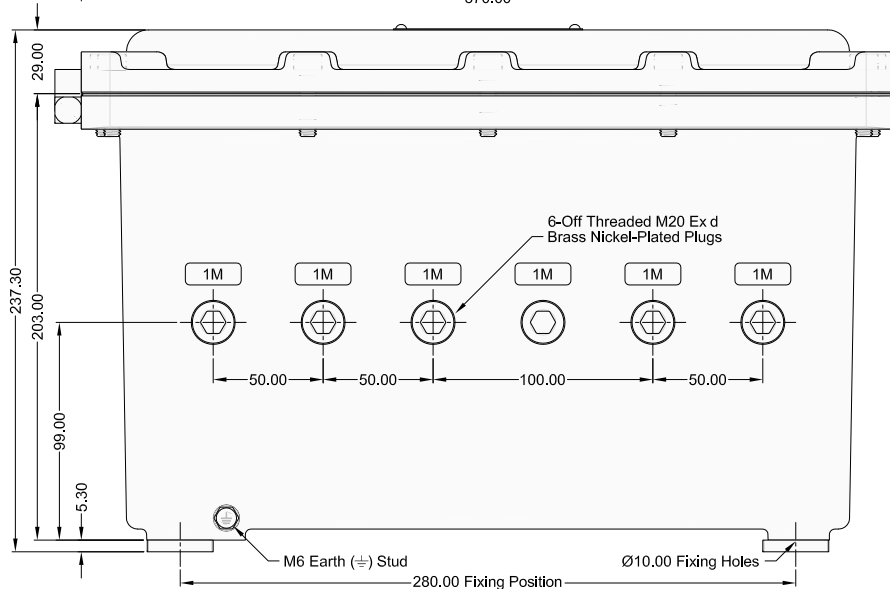
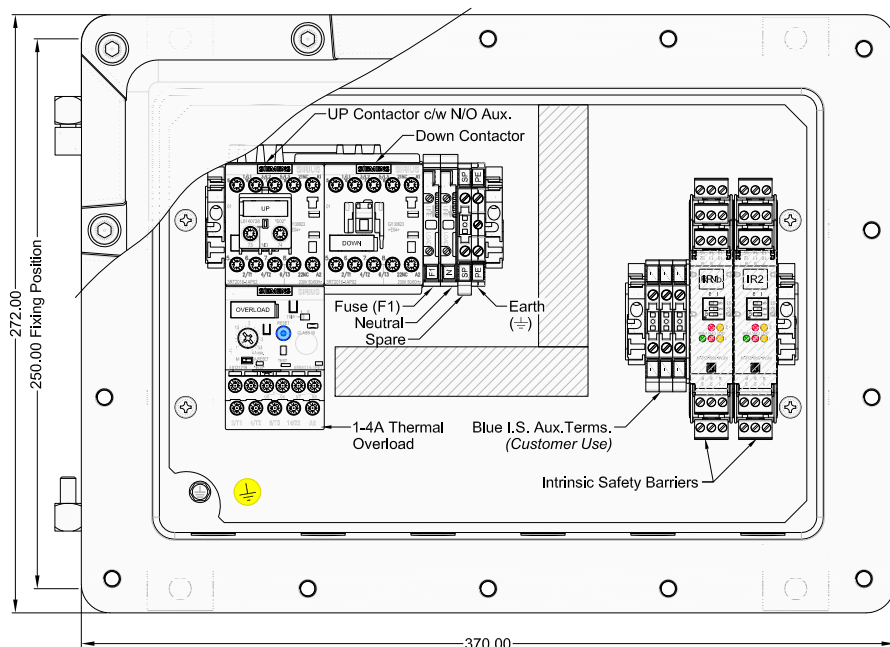
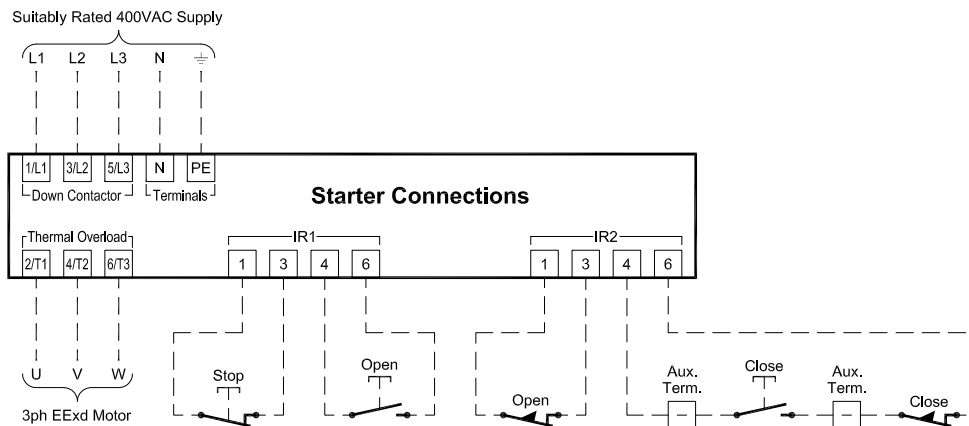


Control Panel Dimensions & Layout



Connections



Power Connections

1. Supply:- Connect a suitably rated 400VAC supply to 'Down' contactor '1/L1', '3/L2', '5/L3' + Terminals 'N' & 'PE'.
2. Motor:- Connect a 3ph Explosion proof operator to Overload terminals '2/T1', '4/T2' & '6/T3'.

Control Connections

1. Stop Button:- Connect a N/C Stop pushbutton to 'IR1' terminals '1' & '3'.
2. Open Button:- Connect a N/O Open pushbutton to 'IR1' terminals '4' & '6'.
3. Open Limitswitch:- Connect a N/C limitswitch to 'IR2' terminals '1' & '3'.
4. Close Button:- Connect a N/O Close pushbutton between auxiliary blue I.S. terminals '-' & '-'.
Close Limitswitch:- Connect a N/C limitswitch between auxiliary blue I.S. terminal '-' & 'IR2' terminal '6'.
i.e. The Close pushbutton & limitswitch are wired in series to 'IR2' terminals '4' & '6' via aux. I.S. terminals.

Note:- Customer connections are shown in dotted. Normally Open - N/O; Normally Closed - N/C

Operation

The shutter may be opened using the remote Open pushbutton in Impulse mode (i.e. Press & release). Shutter opening may be stopped at any point using the remote Stop pushbutton. The shutter may be closed using the remote Close pushbutton in Deadman mode (i.e. Constant pressure). Shutter closure may be stopped at any point by releasing the remote Close button or pressing the remote Stop.

T: +44 (0)1928 579050
F: +44 (0)1928 579259
www.linkcontrols.co.uk
sales@linkcontrols.co.uk

Link Controls
Marantec

Title:-

ATEX EExd IIB T6 EXPLOSION PROOF STARTER INSTALLATION INSTRUCTIONS
(STOCK CODE: 40-2204)

Stuart Rd, Manor Park, Runcorn, Cheshire, WA7 1TS

Drawing No:- LC-1973	Page No:- 1 of 1
Revision No:- G	Rev Date:- 07/11/14
Drawn By:- S.B.P.	Date:- 29/09/00
Checked By:- A.M.	Appr' By:- S.L.